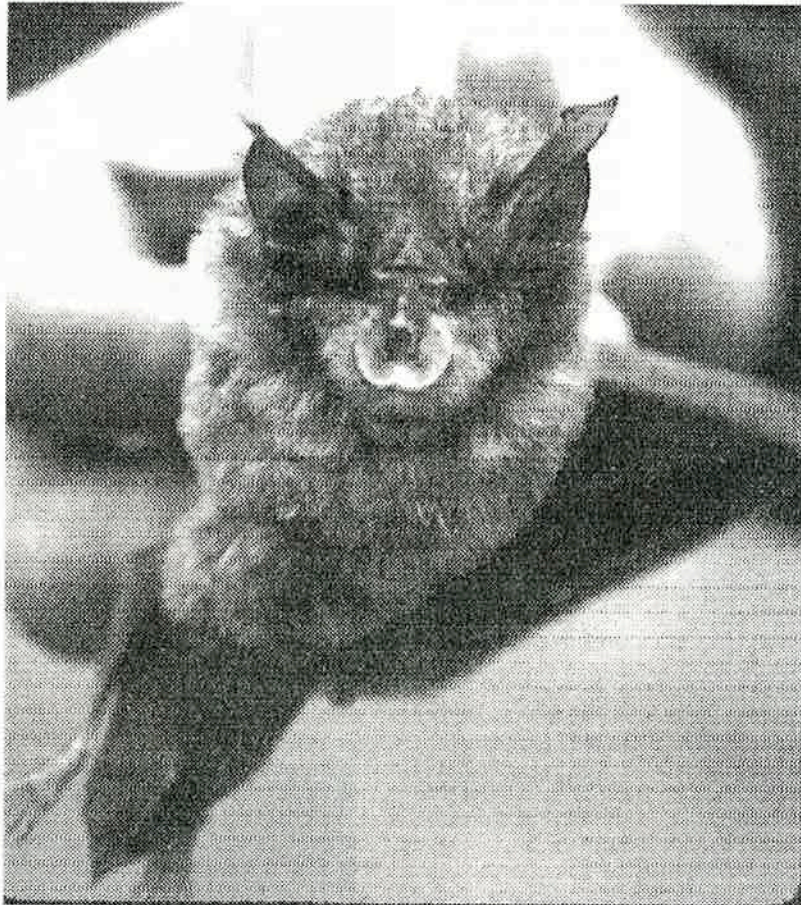


F U S S I



The little bat (*Rhinolophus* sp.)
From <http://www.angelfire.com/md/Chiperi/picsgal1.html>

Vol. 9 No. 3 1997

**The Quarterly Newsletter of the
Flinders University Speleological Society Incorporated**

Flinders strangers in the flinders Ranges

Glenis Crane

Flinders Ranges trip, Oct. Long weekend 97.

Members present: Heiko Maurer, Clare Buswell, Glenis Crane, Sophia Dodds, Johnathon Walsh and Sharon Drabsch.

Mavis showed up early in the trip.

As I arrived at Clare and Heiko's house to go, my thermos blew! Anyway, at around 5 p.m. or so we set off in peak hour traffic for the Flinders. All went well and we arrived late in Friday evening on the doorstep of Clare St. Dora.



Pam Storer - FUSS President.
Seen getting a tan in Queensland

At this stage the pizza we ate at Clare was trying to get revenge on my intestines. We set up camp and went to bed. There was little evidence of the white ghosts (they used to be known as cows), and lots of evidence of birds getting into mischief in the tree above my tent.

Saturday arrived and was spent searching for caves rather than searching the insides of caves.

Search no. 1 took Clare and I to fool's entrances and along caveless hills and dales. Search no. 2 was done with a map

and Clare. Heiko and I passed eagles, galas and one young inquisitive kangaroo. Finally we reached a cave near Mares. Heiko decided to do the macho thing and slide into the entrance (boots and all). When half of his body was in and half out, and it seemed a bit too slippery, he decided it wasn't such a good idea after all. He retreated, perhaps thinking about that exciting book on UNIX which he needed to read, and we all went back to camp. By this time we'd got sun burnt without knowing it.

One of the other highlights of the day was meeting Rambo, his friend and their wives. Rambo had a rifle and enough ammunition to destroy to the red army. His wife made him sleep with the gun beside them because the sound of our car arriving in the night scared the living ---- out of her. Another highlight back

at the camp site was Clare and Heiko dancing. I'm not sure if it was the Fox Trot or Waltz. I was disappointed that they didn't dress for the occasion.

Meanwhile, Sophia, Johnathon and Sharon arrived with chocolate, veges, salad, sick jokes, rice, etc. They thought about making the curry for dinner, while Clare and I were hanging from a tree practising SRT. Later we had curry and conversation.

Sunday turned out to be the big caving day. We found a few new nooks and crannies.



Richard Ewart - FUSS President, then travelled to Mt. Gambier

Inside this Issue

- 2 Trip Report
- 3 Town Well Cave Collapse
- 3 Mole Creek Shaken
- 3 What's On
- 4 Dangers of Becoming a FUSS President

Flinders University Speleological Society

C/4 Clubs and Societies
Flinders University,
Bedford Park
S.A. 5042

Ph. (08) 8201 2276

Clare St. Dora seems to have new and/or stable activity going on. There were also a few dusty bits and a spider's web. Some tunnels went up and up but lead to domed shaped ceilings with tree roots, rather than fancy formations.

Later we went into Mares.

Mavis dropped a dead snake at the bottom of the entrance. Clare checked out the new ladder. It's not that great. Some of the rungs seem to be at odd angles and it's a bit too wide for trying out heel and toe techniques of climbing. Toward the back of Mares we saw lots of helictites and other pretty formations. We observed the no entry sign in front of the Xmas tree area, turned back and made our way out. Before leaving we had a quick look in the catacombs area. This area also has leads going almost vertically upward for several metres. The leads had piles of large rocks at the top of them.

Later we had dinner and left. Johnathon, Sophia and Sharon drove back the next day. I assume that fun was had by all?

Town Well Cave Collapse (SA)

Steve Milner

Hi,

Last night I heard on the grapevine (Marie Chor and Simon Kendrick) that Town Well Cave on the Yorke Peninsula has a new entrance. For those of you who know the cave, the 2m diameter collapse is about 3m from the



Jenny Laidlaw – FUSSI President travelled to Perth

present gated, shored section. To prevent people falling into the cave (a 30m drop) the council has erected some posts and chicken wire as a temporary measure.

That's all until further info is available.

Cheers,

Steve Milner

Mole Creek Shaken

Dave Heap (Savage River Caving Club)

Dear Ozcavers,

A caving trip Saturday to the Mount Cripps karst in Western Tasmania showed recent damage to formations in a cave there. This is presumably as a result of last week's earth tremor

centred near Mole Creek. A cavern containing many calcified tree roots visited a couple of months ago was revisited and many of the delicate formations were broken. Straw stalactites and the other larger formations in the cave remain intact.

Any other significant findings shall be passed on.

What's On

15th Dec
11am-2pm, Plaza, Fremantle Uni
Fair Day

Introduction of people around the
plaza to caving ideas

1pm-4pm, Clubs & Societies
Library Working Bee

Help us find treasures in the old
caving library!

4th Nov
6:30pm on, TBA
FUSSI General Meeting

18th Nov
7:30pm, Maid & Magpie
SASO General Meeting

29th Nov
6:00pm on, 33 Malcolm St
Bedford Park
Helmet Dinner
Celebrate the end of the year from
under your helmet!

27th Dec- 4th Jan
Yarragobilly
Caving Trip to NSW

Dangers of becoming a FUSSI President

The pictures presented to you are those of previous presidents of our club who have succumbed to the perils of the job, and have disappeared to the many lands of Australia. Lee Coshell had the most

hazardous journey in as much as Mavis joined him. The photos given on this page denote an accident where the Hovercraft (Driven by Lee) managed to find the only boat within 100km. And crash into it.



Is this Mavis?



The hovercraft and boat after their chance meeting



The Hovercraft

Rumours circulating out of the meeting in Perth told of uncontrolled laughter and general mayhem. Some Past President's suggested that it would be appropriate to buy a certain President a rubber boat and hovercraft as part of a bath time toy collection. Others stated that Mavis would only covet such things, so as to add them to her collection of sunglasses, coffee mugs, cave locations and car bits that she has taken from FUSS members over the years. In the end it was decided by the group that as FUSS caves predominantly in dry, dusty arid zones, any caving near water was going to be difficult as the skill level of members was quite low, as was demonstrated by this incident. The Safety Officer should be warned.

Background. From 1989 to 1994 all FUSS Presidents and a couple of ordinary FUSS members got jobs in Perth on completion of their degrees. There was nothing pre-arranged in this, just coincidence. Since then all other presidents, bar one, have gone overseas. Numerous other members of the executives of FUSS have similarly gone O/S (Bloody perks of the Job!)

The spectre of Mavis has been with FUSS since 1986 and has been responsible for the disappearance of many items of personal importance to members. Generally Mavis limits her activities to petty theft and mechanical sabotage. However, she has been known to cause considerable angst to persons who shave their beards off, to change weather patterns, and have sex with garden gnomes, who are very close to some executive members of the Australian Speleological Federation. (See FUSSI Vol. 4. Nos. 1 & 2. 1992.)

The club has over the years tried placate Mavis by attempting to employ a Mavis Abatement Officer. However, even after offering a very generous package, (large wage, fully funded overseas trips, spare pairs of sunglasses, pocket knives, etc), the position has remained unfilled. This was, it was rumoured, because Mavis pinched all the applications. As a consequence, the Club in trying to relive itself of Mavis's activities, has done things such as organise trips and not go on them. This worked well as a diversionary tactic, at least once! The Club has sent Mavis post cards of exotic and far away places, usually near to a travelling O/S FUSS President, in the hope that Mavis would join them. This also worked, but it had the unfortunate side effect of causing the well known disease, *Travel Itch*, amongst FUSS members resident in Adelaide. The result of this was an exodus of about five members of FUSS to secret interstate locations.

The only thing that the club has been able to do that in any way curbs Mavis' rampant mayhem is to adopt a Bollard, preferably near a caravan with a black snib. Nobody in the Club seems to know why this works. This probably stems from the fact that club members don't frequent caravans even with black snibs!

The Joint Club Search and Rescue of Simon Kendrick

Clare Buswell

Corra Lynn. September

Present: Marie Choi, Simon Kendrick, Clare Buswell, Glenys Crane, Jonathan Walsh, Marion Tate, Sharon Drabsch, Rob Mueller, Sofia Dodds, Linda Kulwikowski, Anne Jackson, Kate Lloyd, Seana O'Brien, Tracy, and two other Scout Caving Group Members.

This was originally meant to be a two day exercise, but timetables and work commitments took over and it ended up as a one day event. CEGSA decided to organise it for this year as FUSS had organised the last three or four of these exercises over the years. As usual the day was well attended, mostly by FUSS members and half of those are up and coming medical students.

The first exercise for the day was to find a lost person, (Simon Kendrick with book). We had been given his last "known location" and were to break into two groups and search for him. This turned out to be an interesting exercise mainly due to the fact that map reading in Corra Lynn for the uninitiated is like looking for a needle in a hay stack. The result was that one group spent a lot of time working out where they were and did not find Simon in the time allotted to the task. The other group had similar problems but managed to get to there appointed area OK. Some systematic searching then occurred and voice contact was made. However this contact was ignored, because the person who made it thought mistakenly, that it was one of our group who was

talking. The allocated time for the exercise approached and it was decided to just take a look down there....

Voice contact was made again and this time Simon was found, with only part of his book read!

The second exercise for the day was to complete a drag mat lift from the bottom of Rope Crevasse back to the entrance. This lift is not simple as it requires going through a low crawl, followed by a lift up a steep crevasse, another crawl and up stairs. The group consisted of sixteen people from which we had to take out the 'patient,' the first aide person, two scouts to tell us what was coming up next and a person in charge of the whole exercise. This left us with eleven people on drag mat carrying. We borrowed back the person in charge for one team of lifters.

The hauling through the crawls worked well enough, with teams exchanging places, carrying to a set point and handing on the next team. The haul up the crevasse required both the scouts as well as the two teams. The crevasse is narrow at the exit end and this means that you can place people on either side of the crevasse and pass the patient up the middle. The passing procedure is safe and no rigging is required. In this case the lift went like clock work and Tracy our fearless patient, felt reassured and well cared for.

A note on the drag mat. The greatest difficulty in this exercise appeared in tying up

the mat so as to secure the patient both horizontally and vertically. The mat has a hauling rope on one end and is tied together with 50mm seatbelt tape. It also has handles for carrying along each side of the mat and when these are in use the whole mat pulls in around the patient. This means that when tying the patient in the 50mm tapes must be tight, as when the mat is lifted off the ground these tapes come loose and the patient may not be secure. The bottom of the mat must also be tied so that the patients feet rest on it and do not fall through it.

The other issue with the mat is that it is heavy and cumbersome. This means that it is often not taken on all club trips and that in a real rescue a lot of energy would be used on just getting the mat to the patient. Finally if one had to drag the mat into a delicate area of a cave the impact on the cave would be considerable. Maybe it is time to think about another sort of rescue mat.



NOTES ON RIGGING

Clare Buswell. Safety Officer. FUSS

When rigging a ladder and a belay or any sort of rope in a cave there are a few simple rules that must be followed at all times.

They are:

- 1) The anchor must be bomb proof: i.e, solid, secure, safe, immovable.
- 2) The rigging must be negotiable by the whole group.
- 3) Environmentally friendly.
- 4) A ladder must always be used in conjunction with a belay.
- 5) Never throw an end of a rope down a pitch without a knot in it.

TWO ANCHORS

Using two anchors to tie off requires special attention. The angle the rope makes between the two anchors can place stresses upon the rope that far exceed the working load of the rope. Even though it seems that the twin anchors are sharing the load, situations may arise causing each anchor to sustain more than the actual weight of the load. When the two ropes form an angle of 120° , each leg of the anchor is supporting 100% of the load. Even if there are three or four anchors involved, if the angle between them all is 120° , each leg would be supporting 100% of the load total. This is because, as the angle increases the legs start pulling against each other. Above 120° degrees the tension begins to increase at an alarming rate. At 150° degrees the load is 200% of the original load on each leg. In actual field work 90° degrees is a safe relationship between the two legs.

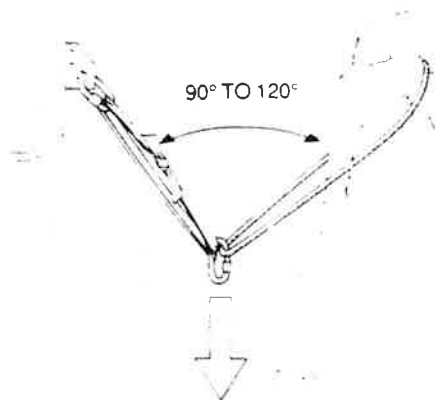


Fig. 4a. The angle between two anchor points should be less than 120° .

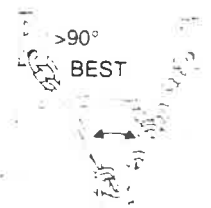


Fig. 4b. 90° or less is even better.

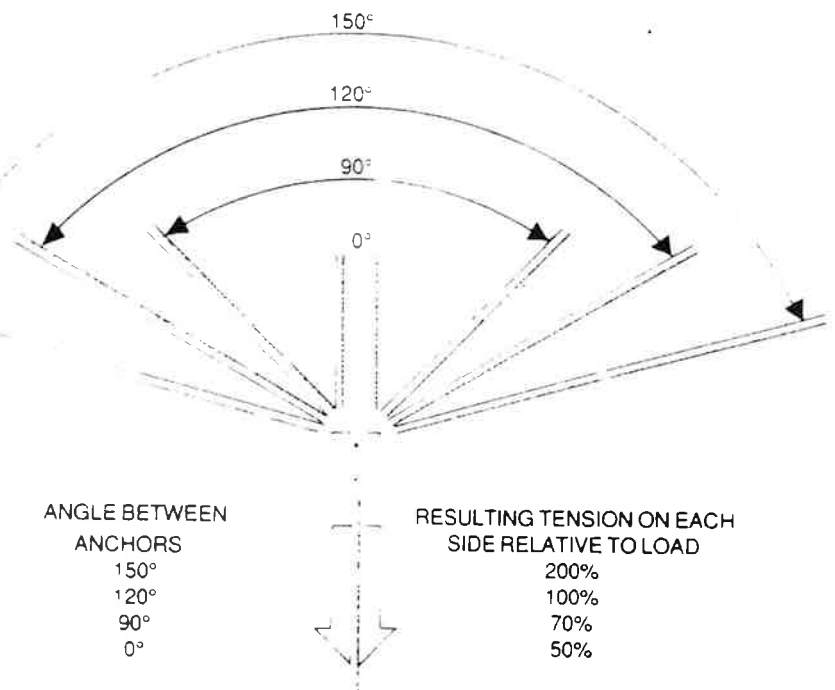


Fig. 4c. The force on a rope or cable approaches infinity the closer the angle gets to 180° . Due to the elasticity in rope this unlikely event will never happen.

Illustration from *On Rope*.
Padget. A. & Smith. B.,
National Speleological
Society. 1987. p. 60-61.

NOTES ON RIGGING

BELAYING WITH A LADDER

When operating a belay using Static rope, the rope must always be taut. This is to reduce the possibility of shock loading the rope, climber and rigging in case of a fall. Therefore the person climbing the ladder must not climb any faster than the person controlling the rope. Static ropes are used in caving rather than dynamic ropes because of their abrasion resistance qualities.

Calls used in belaying can be:

Belayer: "belayer ready."

Climber: "take in, that's me."

Belayer: "climb when ready."

Climber: "up." "stop." "down."

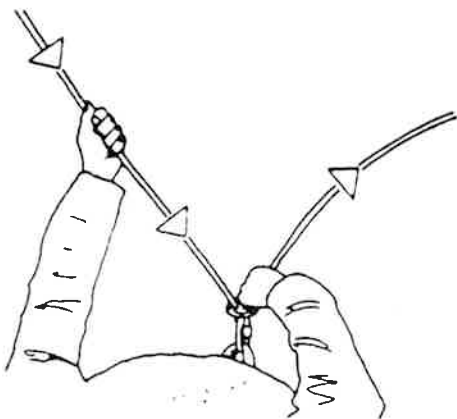
Belayer: "OK", meaning affirmative.

Climber: "safe", meaning finished climbing and off safety line.

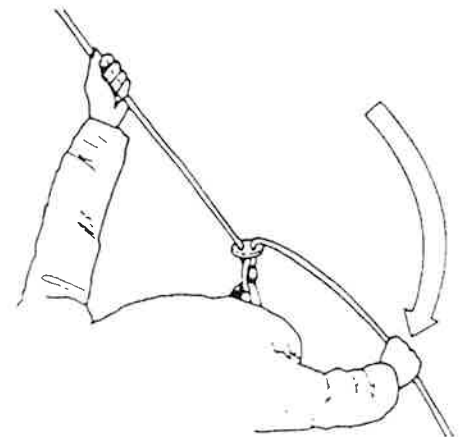
The word "slack" should NOT BE USED in calls as it is ambiguous and could mean either "up or down."

Reference: Australian Speleological Federation Inc. *Cave Safety Guidelines*.

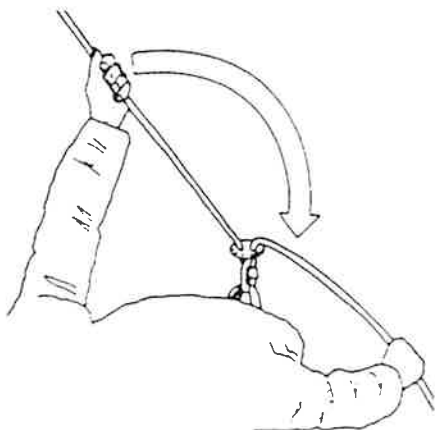
five-step belay method



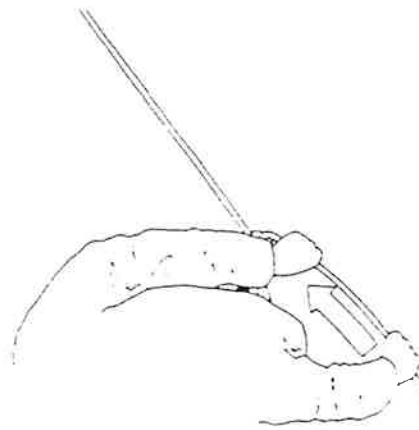
the rope is fed back into the belay device by the guide hand and pulled through with the brake hand



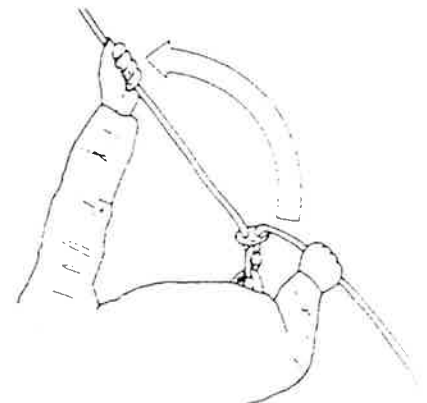
the brake hand now locks off the rope



the guide hand lets go of the guiding side of the rope and firmly grasps the brake rope next to the belay device.



slide the original brake hand along the rope until both hands meet



the original guide hand lets go of the brake rope and returns to grasp the guide rope

Review of ASF Fees, Membership & Insurance

Compiled by John Dunkely. For comments asap.

Key Principles

The proposed measures have the overall aim of achieving the following:

- A reduction in ASF fees for nearly all members, compared to those previously foreshadowed for 1998 (a lower corporate & student rate)
- A more equitable basis for sharing the cost of administering the ASF & of paying the insurance premium
- Allowing clubs to decide for themselves how to handle the issue of fees for Life Members & for Prospective Members in their first 12 months.
- Non-core costs of maintaining ASF are offered instead as options
- Only ASF members are eligible for insurance
- Reduction of the risk to the insurer enables ASF to seek a lower premium or at least to minimise the risk of a rise in premium
- A more proactive, entrepreneurial approach to building and maintaining membership and membership services

1. Voting

- The proposed measures *do not* change the method of voting or the manner in which the Federation is governed

2. Fees in General, & Discounts

- *Fees will not be greater than already foreshadowed for 1998. Nearly all will be less.*
- The existing differential fee rates will be retained and provision made to expand them (see 3. below)
- The standard membership fee is the individual member rate

Rationale: The distinction between the different fee rates reflects considerations of equity, ability-to-pay, the administrative cost of collection, and an incentive to prompt payment. Maintaining a corporate member rate lower than the individual rate emphasises the advantages of club membership and the lower cost of collecting fees in bulk through clubs. These provisions already exist and the proposed amendments will 'tidy up' their administration.

3. Members

Prospective Members of Clubs

- Clubs may obtain an exemption from paying ASF fees for any or all of their prospective members in the first 12 months of their having that status (i.e. make it optional). Clubs decide for themselves whether to take advantage of this concession.
- However a contribution to the insurance covering ASF's liability at least would be sought
- They would not receive AusCaver & would not be counted for voting purposes.
- Those prospectives wishing to receive AusCaver & other benefits of membership may be offered an incentive to do so, and would then be counted for voting purposes.

Rationale: This recognises that as an incentive some clubs offer discounts to their prospective members, some of whom do not remain for long. The 12-month limit recognises that those who retain membership for longer than that period have demonstrated a serious interest in caving.

Life Members of Clubs

- Life Members who do not pay a subscription to their club have the option of paying the corporate membership rate (through their club) to ASF.
- They would then have the same status as other members of corporate member clubs and would be counted for voting purposes.

Rationale: This recognises that such members are often 'inactive' cavers who may nevertheless wish to remain in touch. They are different from subscribers, who are not members of ASF.

Members of more than one club

- Clubs are reminded that individuals who are members of more than one club need pay only one ASF membership fee. It is incumbent on the club to ensure that this provision is employed fairly. *(this is not a change in procedure but a reminder)*

Individual Members

- Provision is made to offer incentive discounts from time to time to Individual Members e.g. those joining for the first time, and in certain other circumstances

Rationale: A more proactive membership drive enables the cost of running ASF to be spread more evenly. This provision is analogous to that proposed for newly joining Provisional or Corporate Members. The intention is that it operate for a limited period only e.g. one year.

4. Provisional Members and Associates

- The present categories of Associate remain unchanged in principle but that of Participating Associate is restyled Provisional Member & thus becomes eligible for insurance (see below)
- Other Associate groups as such are not eligible for insurance
- Individuals within those groups obtain insurance automatically if they become Individual Members.

Rationale: This distinguishes between groups which are not eligible for membership but which wish to maintain an association with ASF, from those whose primary objective is speleology (and are therefore eligible for ASF membership). ASF can accept responsibility for its members. It should not have to accept responsibility for the actions of non-members. *The distinction is crucial for legal and insurance reasons.*

Conversion of Participating Associates to Provisional Membership

- The present term *Participating Associate* is restyled *Provisional Member*
- Its purpose remains unchanged
- The present flat rate fee is converted to a per capita fee
- Rights & responsibilities are as for corporate member clubs, including insurance cover, except that provisional members do not have a vote.
- The Executive is empowered to admit Provisional Members subject to ratification by the following ASF Council Meeting
- As an incentive & to smooth the financial impact, a discount may be offered to new provisional member clubs in the first year of their membership
- Provisional Members are encouraged to become Corporate Members if they comply with the Membership Policy, but there is no compulsion to do so
- Only the Council may admit Corporate Members

Rationale: Under the current Membership Policy these are clubs whose primary objective is speleology and who have applied for membership of ASF but have not yet been accepted. The proposed amendments would enable them to effectively be treated as members pending compliance with the membership policy. This provision is essential for legal and insurance reasons.

OK, folks it is on again

**THE ANNUAL FUSSI END OF YEAR
HELMET DINNER**

COME ALONG AND

Catch up with people you haven't seen for a while, or

Find out what is happening for the next trip to

YARRANGOBILLY

SO

**You need to make sure you have got yourself organised
for Saturday Nov 29th**

**at Jonathan's and Sharon's House
33 Malcolm St Bedford Park.
6.30. pm.**

**Women bring savoury things and
Men bring sweet things.
Yum ummm!**

Please BYO drinks and plate, spoon etc.

Any Mavis impersonations will not be admitted

5. Insurance

- Only ASF members are eligible for insurance
- All members of ASF contribute to covering the ASF's Liability
- Clubs not wishing to be included in the Public Liability insurance may obtain an exemption.
- The exemption is optional and is on a club basis, not an individual basis, because the Public Liability part of the insurance protects the liability of the club as well as of individual members

Rationale: ASF accepts responsibility for members, and expects them to cover its legal liability as a core function. Public Liability insurance is offered to those clubs who desire it as a service, at very competitive rates.

6. AusCaver

All responses to the Initial Discussion paper supported AusCaver in one form or another. Most responses said it should be compulsory, 4 times a year. Two suggested that it could be optional and two said it should be less expensive. There were one or two novel suggestions e.g. that a larger annual be supplemented by smaller news bulletins, and that some of the AusCaver material might better be placed in *Helictite*. There are apparently no examples of member clubs making their own newsletters optional to members.

Since most responses clearly wished AusCaver to continue in something like its present form as a core component of ASF membership, the Executive has not made a recommendation. However some accommodation to member clubs' wishes has been made by the proposals relating to prospective members and life members of clubs, who would not receive AusCaver if their member clubs exempted them from fees.

The Executive believes, nevertheless, that because AusCaver is the primary point of contact between members and ASF, and is the flagship for ASF's external image, continued debate on its role, its image and cost would be desirable.

7. "Tidying-up" & implementation actions required

- Minor changes only are required to Constitution & By-laws
- Membership Policy to be incorporated as a By-law so as to comply with the Constitution
- Ad hoc Committee to rework Membership Policy & Policy on Associates
- Strengthening of role of Membership Secretary

The wording of necessary motions will be circulated with the Agenda for the ASF Council Meeting.

8. Comparison with Other Organisations

This information is from submissions member clubs responses to the Initial Discussion Paper:

Affiliation to national speleological body analogous to ASF (cost in Australian dollars):

USA	\$43	France	\$29 (quarterly journal only?)
New Zealand	\$32	UK	\$33

Affiliation of local club members to state or national body in other sports:

NSW Canoe Association: Individual members	\$57, members of member clubs \$27 (both incl. insurance)
Tenpin Bowling League	\$14 (no journal)
NSW Golf Association	\$13 (no journal)

WHO IS WHO IN FUSS

President

Liam Dwyer,
University Hall,
GPO Box 2100
ADELAIDE 5001
Ph: 8291 6057

Secretary

Jonathon Walsh,
33 Malcolm Street,
BEDFORD PARK
5042
Ph: 8374 4072

Treasurer

Paul Waclawik,
62 Turners Avenue,
COROMANDEL
VALLEY 5051
Ph: 8278 4820
Paulw@camtech.com.au

Equipment Officer

Sofia Dodds,
24 Shepherd's Hill
Rd, BEDFORD PK.
S A. 5042
Ph: 8277 2581

Librarian

Glenys Crane,
56a Railway
Terrace,
EDWARDSTOWN
S A. 5039
Ph: 8293 1311
C/- Physiology.
FMC

Safety Officer

Clare Buswell,
PO Box 131,
NAIRNE 5252
Ph: 8353 6018

Newsletter

Editors

Debbie Callison,
62 Turners Avenue,
COROMANDEL
VALLEY 5051
Ph: 8278 4820

Paul Waclawik,
62 Turners Avenue,
COROMANDEL
VALLEY S A. 5051
Ph: 8278 4820
Paulw@camtech.com.au

South Australian Speleological Council Reps

Sharon Drabsch,
33 Malcolm Street,
BEDFORD PARK 5042
Ph: 8374 4072

Australian speleological Federation Reps

Keven Cocks,
10 Sloan Road,
HAWTHORNDENE
S A. 5051
Ph: 8278 3156

**FUSS meets the
first Tuesday in
the month.**

Postal Address

C/- Clubs and
Societies
Flinders University
P.O. Box 2100
Adelaide. S A 5001
Ph: (08) 8201 2276

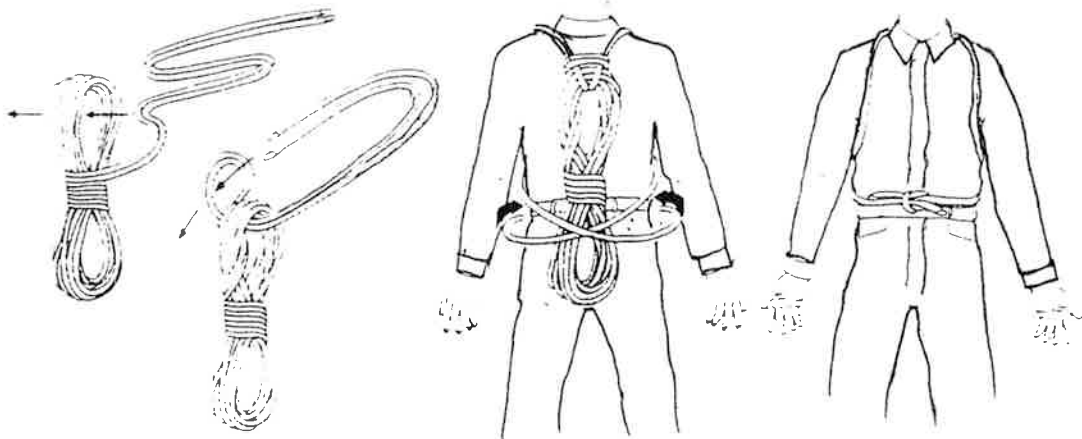


Fig 2-23 Backpackers coil